

Central Subway UMS Utility Relocation

Union Square Business Improvement District

January 06, 2011

Construction Calendar & Work Times/Schedules

- Anticipate construction from January to November 2011, then resuming work in January 2012 through June 2012 (480 calendar days of construction work).
- Construction is expected to last at least 16 months, including the Holiday Moratorium period (Thanksgiving to New Years inclusive).
- Planned construction hours: 7:00 a.m.-7:00 p.m. (First few weeks of project will be 7:00 a.m. to 3:00p.m.).
- Night operations: water line tie-ins, sidewalk demolition and restoration at store entrances will be performed after store business hours.

Estimated Project Durations*

- Mason and Fifth streets – 6 to 10 months
 - O'Farrell Street – 8 to 10 months
 - Geary Street – 8 to 10 months
 - Ellis Street – 6 months
- Simultaneous activities
- Stockton west (Geary to O'Farrell) – 2 to 3 months
 - Stockton east (Geary to O'Farrell) – 2 to 4 months
 - Stockton east (O'Farrell to Market) – 3 to 4 months
 - Stockton west (O'Farrell to Market) – 3 to 4 months
 - Stockton center of road (Geary to Post) - 5 months
- Per side, per block in sequential order
- Maiden Lane – 6 weeks
 - Plumbing in select building basements – 4 months

**Pending unforeseen conditions and severe weather conditions*

What to expect?

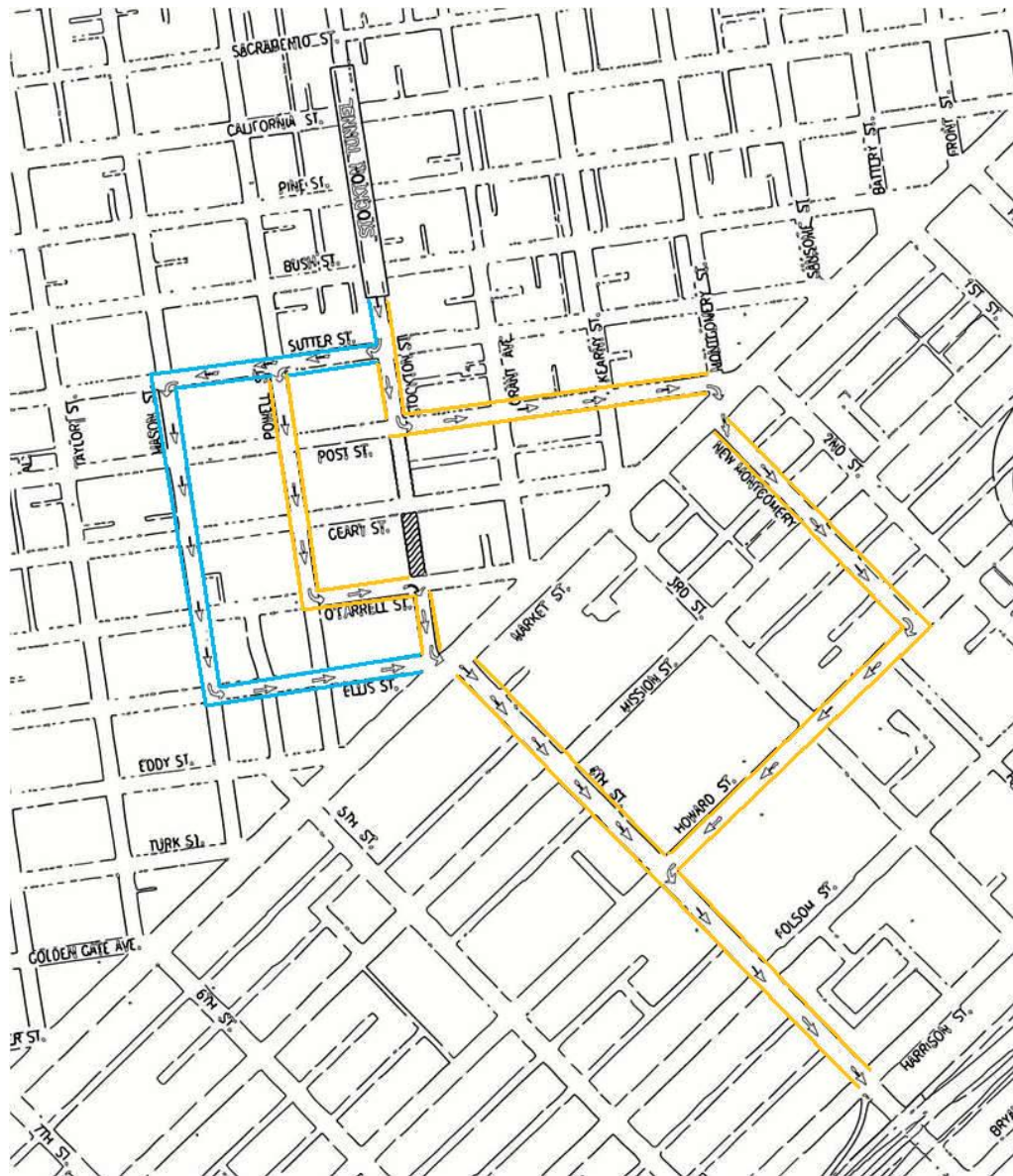


Joint Trench Utility

- Sidewalks along Stockton Street will be removed in phases for utility relocation.
- First phase will relocate underground utilities from the street under the sidewalk. Second phase for lateral connections will take place on the second part of the first phase.
- At the end of the utility relocation work, sidewalk will be restored with temporary City standard concrete sidewalk.
- We anticipate the removal, construction, and restoration of sidewalks for utility relocation to last three to four months per side, per block.
- After completion of the UMS station construction, sidewalks will be restored to their original finish (i.e. Neiman Marcus Terrazzo tiles, Macy's black/sparkled concrete, etc.)

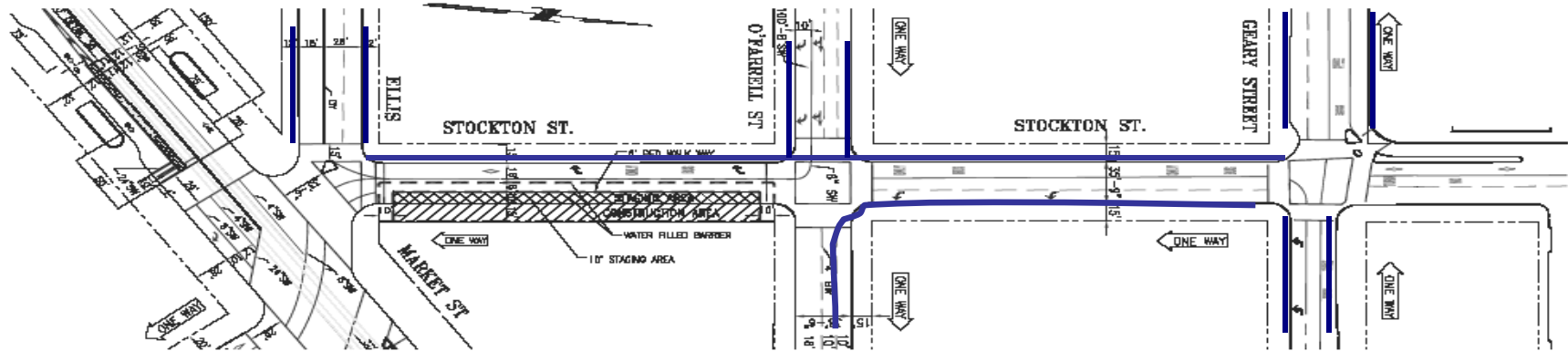
Traffic Routing and Vehicle Access

- From 7:00 a.m. to 3:00 p.m., one lane of through traffic will be provided Stockton Street for Muni, convention/charter, tour buses, local delivery trucks, and taxis only.
 - Other vehicles will be rerouted off Stockton Street (See proposed traffic rerouting plan).
- From 3:00 p.m. to 7:00 p.m., two lanes of through traffic will be provided on Stockton Street.
- From 7:00 p.m. to 7:00 a.m., one lane of through traffic will be provided on Stockton Street.

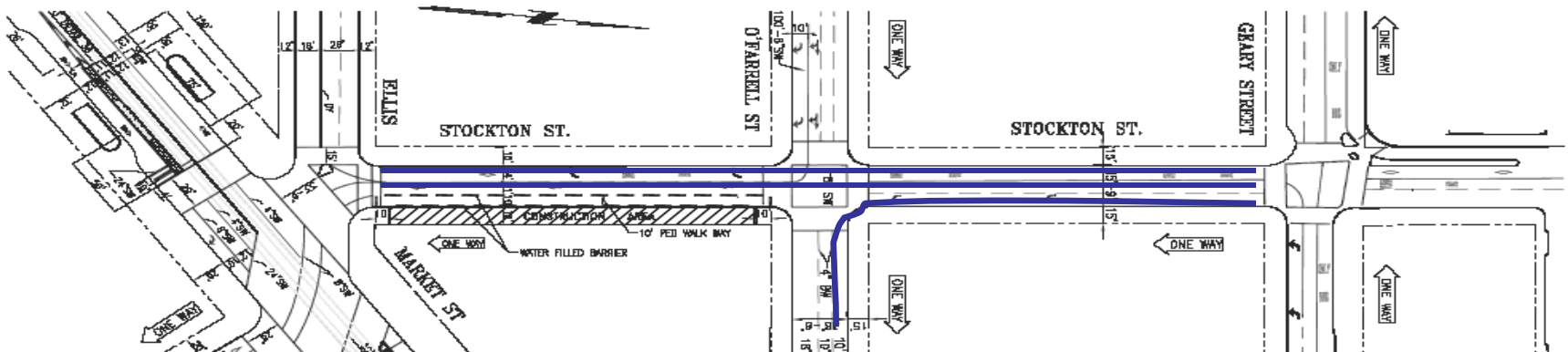


Traffic Detour Plan

Traffic control plan



TRAFFIC CONTROL PLAN (7AM-3PM, M-F)
STOCKTON ST. (East Side) - ELLIS & O'FARRELL



TRAFFIC CONTROL PLAN (3PM-7PM, M-F NON-WORKING HOURS)
STOCKTON ST. (East Side) - ELLIS & O'FARRELL



SFMTA

DESIGNED BY: C.H.
CHECKED BY: A.W.
DATE: A.H.
PROJECT: A.K.W.
DRAWN BY: M.F.
SCALE: R.E.



CITY AND COUNTY OF SAN FRANCISCO
MUNICIPAL TRANSPORTATION AGENCY

STANDARD
EXCLUSIVE CONTRACT

THIRD STREET LIGHT RAIL PROGRAM
PHASE 2 - CENTRAL SUBWAY
UNION SQUARE/MARKET STREET STATION UTILITIES RELOCATION

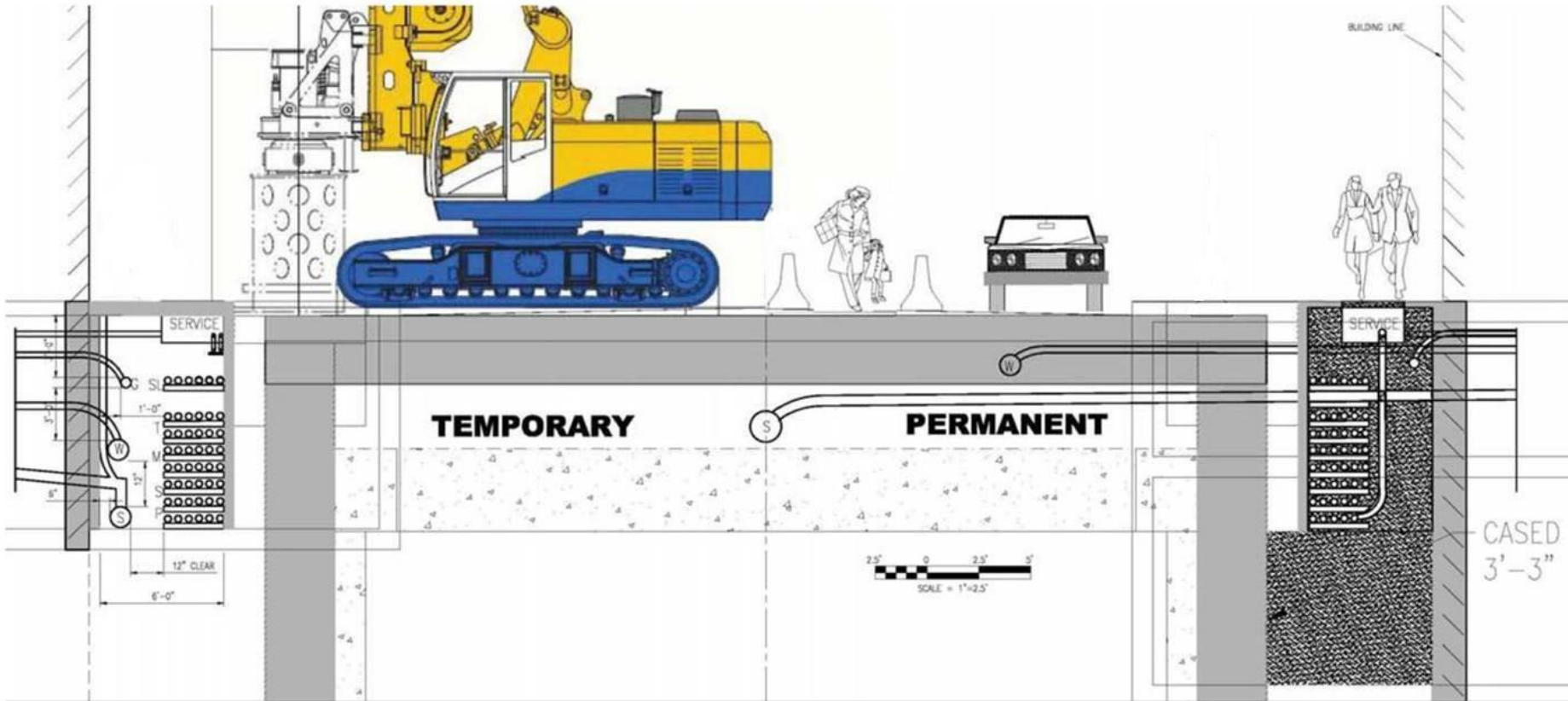
TRAFFIC CONTROL PLAN
STOCKTON ST.(East Side) - ELLIS & O'FARRELL

COPYRIGHT NO. 1251
PROJECT NUMBER: SF
DRAWING NO. TR-001
SHEET NO. 008

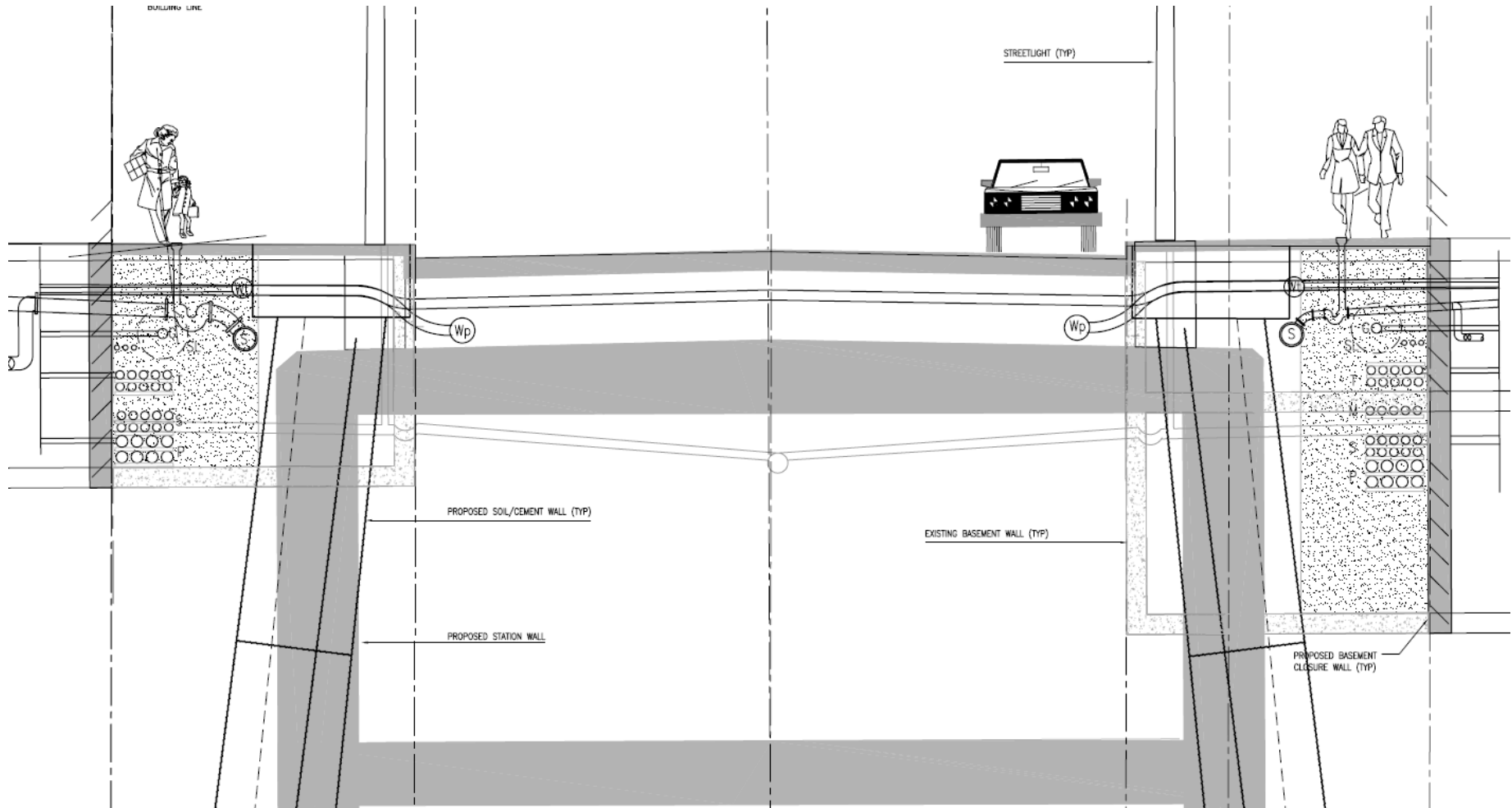
Pedestrian Access

- Triton barriers
 - Construction orange
 - Can be easily moved Block view to store windows
- Custom barriers
 - Can be anchored to the street
 - Can have plexi-glass so people can see the store windows
 - Looks less like a construction zone
 - More inviting to customers
- Contractor will always maintain safe pedestrian access to all stores during business hours. Construction directly in front of store entrances will only allowed during off hours.
- ADA access will be maintained at all times.
- On Stockton Street, contractor will only be allowed to work within one block and on one side of the street at a time.
- Strict contract terms are in place to keep the contractor in compliance.

Utility Relocation- Stockton St



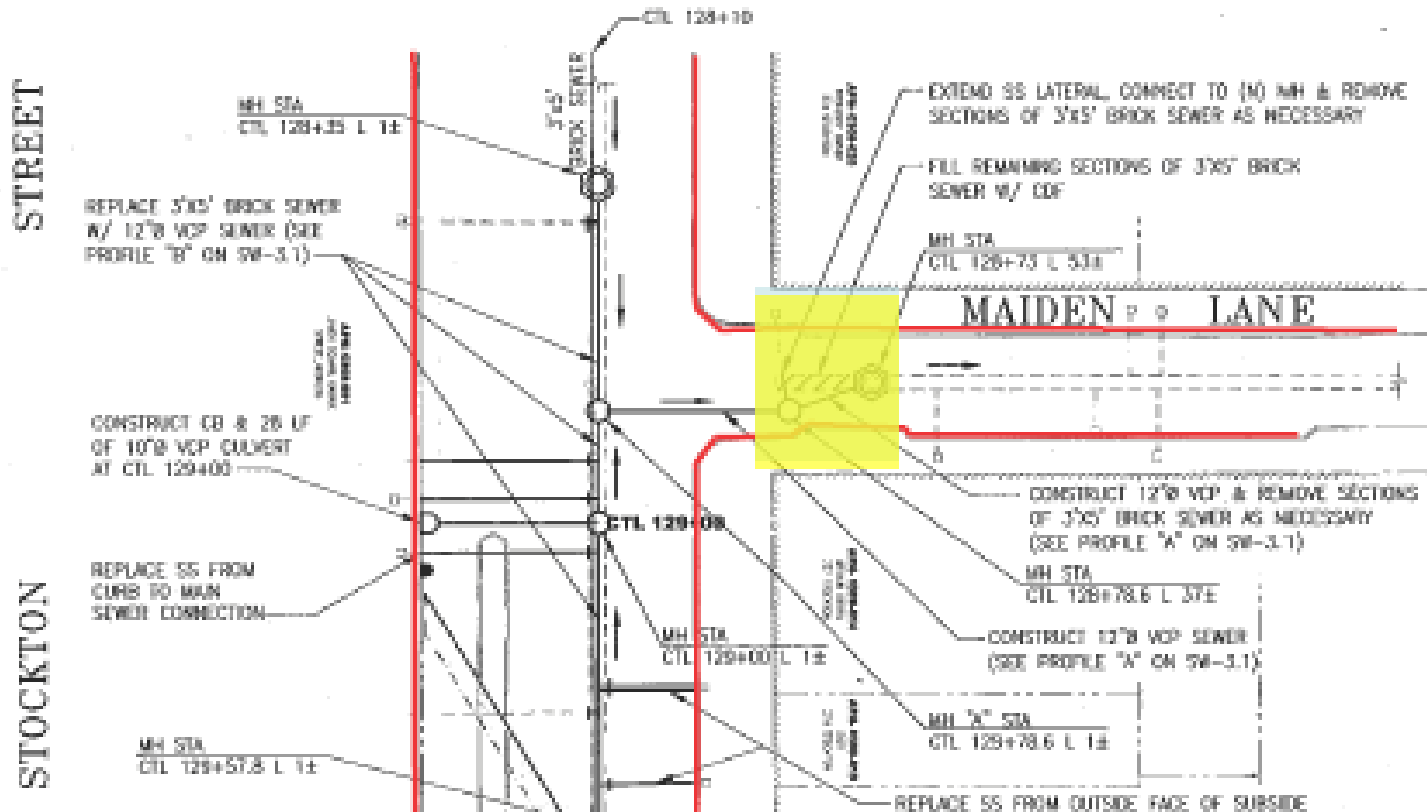
UMS Final Utility Placements Stockton St



Maiden Lane Construction

- Approximately 25 feet of the sewer line in Maiden Lane will be replaced. The sewer trench will be approximately 3 feet wide and 12 feet deep.
- Work will be performed from 7:00 a.m. to 3p.m.
- Maiden Lane work will last approximately 6 weeks. The Contractor will schedule this work so that it does not conflict with the Maiden Lane Art Shows between January & April 2011.
- There will be no impact to the existing sidewalks on Maiden Lane or the gate, which closes off the street.
- The roadway on Maiden Lane will be repaved from Stockton Street to 10 feet past the trench once completed.
- Barricades will be used to section off this trench from the existing cafés and stores.

Maiden Lane



Store & Street Signage

- Central Subway Project will provide informational signage for businesses as needed (i.e. “open for business”, name, logo, etc.).
- Standard traffic signs will be used to detour pedestrian and vehicle traffic.
- Variable message signs will be placed on Geary, O’Farrell, and Stockton streets to inform approaching traffic of detour routes.

Barricades

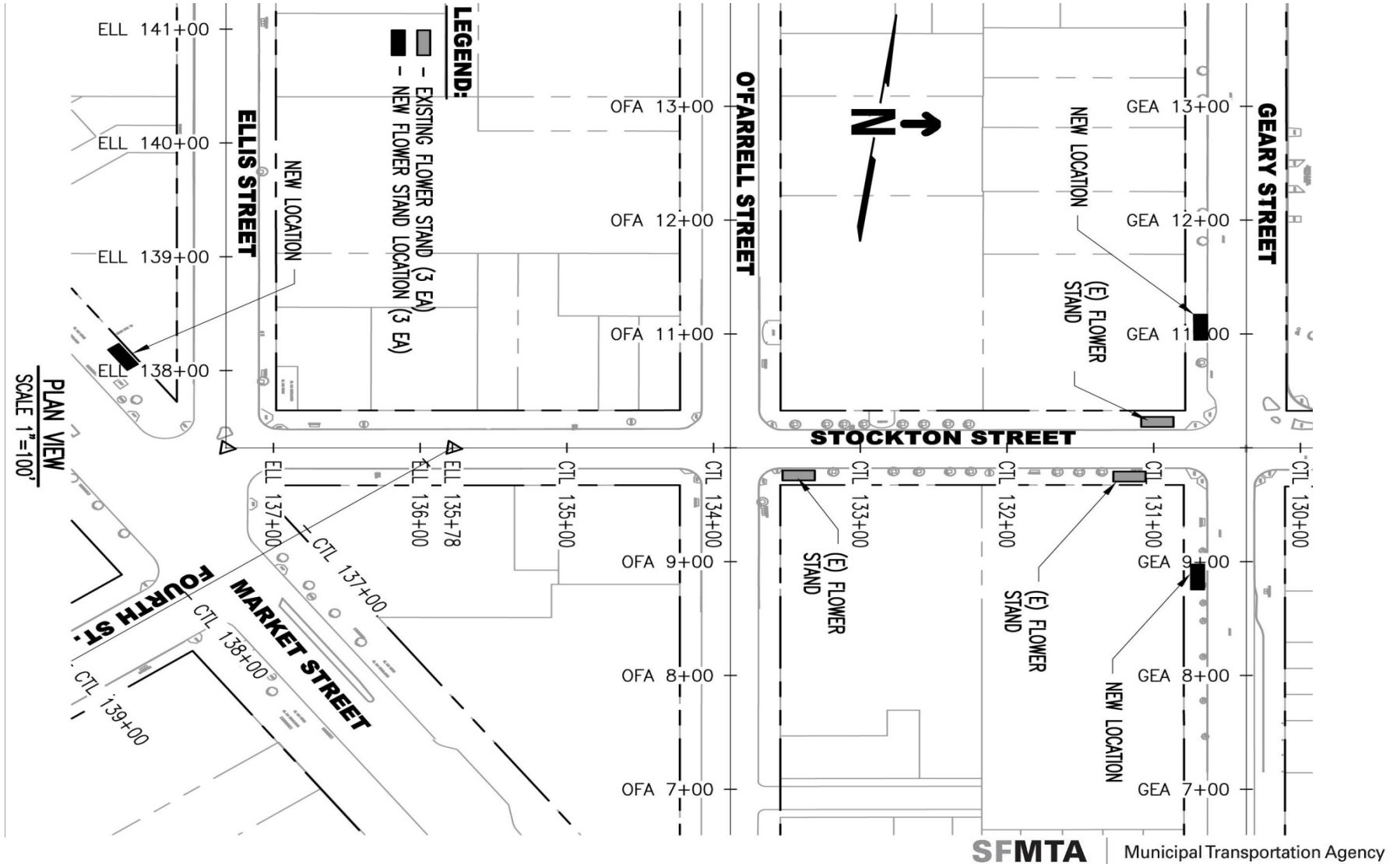
For temporary barricades :

- Triton barricades
 - Custom wooden barricades
- Barricades will typically be six feet high barriers adjacent to construction activities and four feet high barriers adjacent to traffic.
- Barricades shall be sturdy enough so that they cannot be pushed over once anchored in place.
- Triton barricades shall be placed along both sides of the walkway leading to business entrances from the public pedestrian walkway to storefronts. Other entrances' access will be coordinated with businesses.
- Barricades on painted white.
- Individual businesses providing graphics in electronic format will be placed along their designated location.
- The contractor will repair or replace promptly on worn, graffiti, and/or damaged barricades.

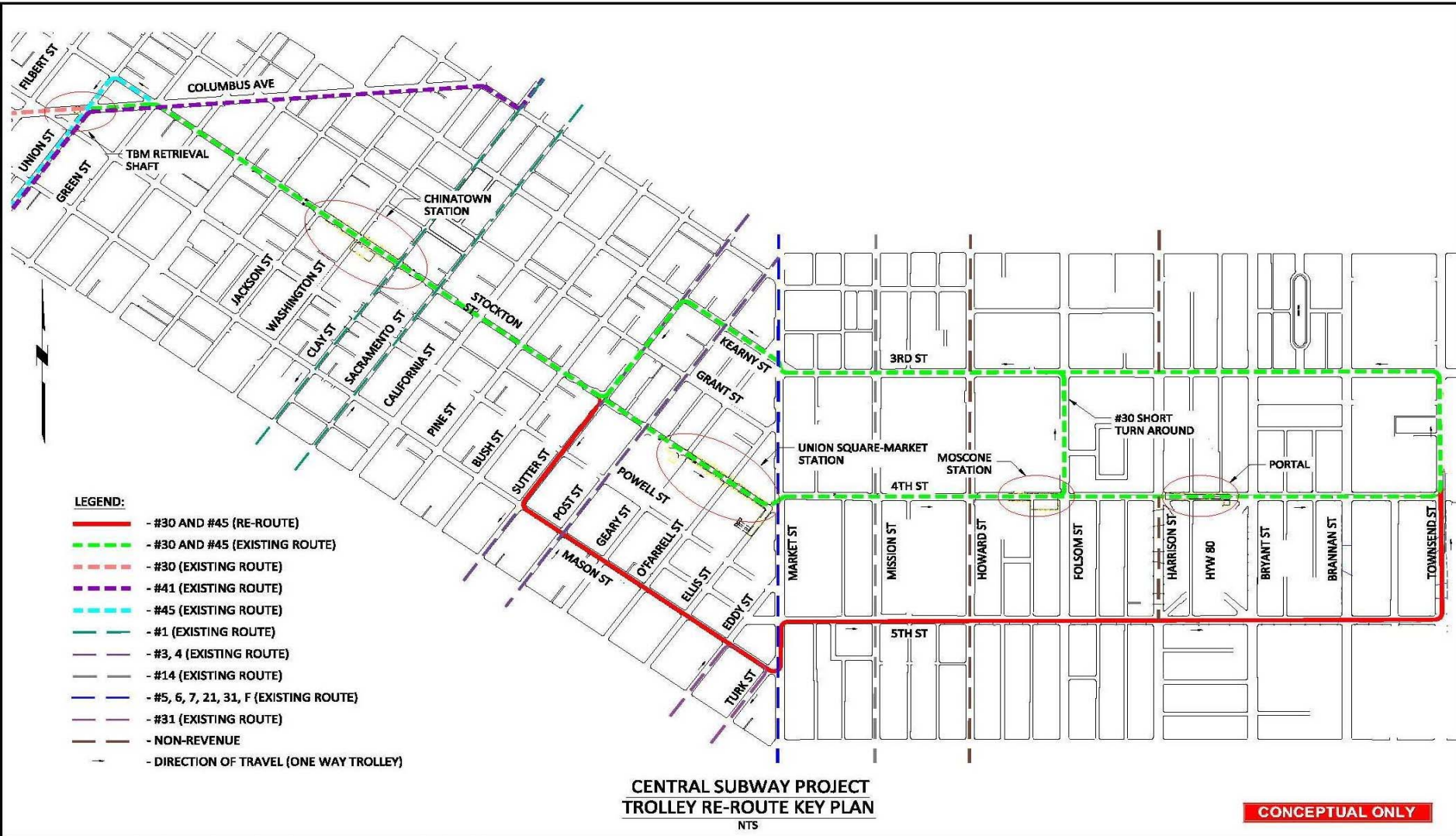
To be relocated to new (temporary) locations:

- Flower stands on Stockton Street.
- Advertising kiosk
- All street vendors within the street right of way (i.e. hot dog carts, merchant vendors, etc.) will be relocated per SFPD street vendor policies. (Locations to be determined).
- Bus shelter on Geary Street will be moved approximately 4 ft. from its existing location.
- All trees and/or planters that are removed will be put back in place at conclusion of station construction.

Flower Stand Exhibit



Trolley Reroute



Commitment to minimize impacts:

- Our policy is to respond to all business/community concerns and/or complaints by the close of business the day they are received.
- Central Subway Outreach team will work with the appropriate staff (i.e. construction manager, resident engineer, and/or contractor) to correct the problem within 24 to 48 hours.
- Communication tools: The Central Subway Project staff will use various tools to update the public on construction progress, changes, potential problems, etc. This will include; letters, public notices (mailed and/or hand delivered), Twitter, Blogging, or direct communication from contractor to store management.
- The Contractor is required to clean the construction site daily after each shift. In addition, the SFMTA is funding a full time maintenance worker to assist in street and window cleaning for the duration of this contract. This position will be hired and supervised by the Union Square BID and managed under MJM Management Group.

24 Hour Emergency contacts will be the following:

- | | |
|--|----------------|
| – Michael Acosta, Central Subway Project Resident Engineer | (415) 678-8068 |
| – Donovan Gilliland, Synergy Project Management | (415) 850-0826 |
| – Brajah Norris, Central Subway External Affairs Manager | (415) 701-5263 |

Stay informed and connect with us online:



Web site: www.sfmta.com/central

twitter



Twitter: www.twitter.com/central_subway



Facebook: www.facebook.com/centralsubway



Blog: www.centralsubwayblog.com

Project Information

Brajah Q. Norris

External Affairs Manager

Central Subway Project

821 Howard Street

San Francisco, Ca 94103

Phone: (415) 701-5263

Email: brajah.norris@sfmta.com

Website: www.sfmta.com/central

Project Infoline: (415) 701-4371

